

WALL LEGEND

- EXISTING 12" CMU WITH BRICK VENEER TO REMAIN
- EXISTING 8" INTERIOR PARTITIONS TO REMAIN
- NEW 2x6 STEEL STUDS @ 16" O.C. WITH SPRAY FOAM INSULATION / STUCCO EXTERIOR
- NEW 8" X 16" CMU WITH 1" RIDGID INSULATION AND 4" X 8" X 16" MASONRY VENEER
- NEW 8" X 16" STD GREY CMU WITH SCORE LINE WHERE VISIBLE @ ELEVATOR LOBBIES

SWITCHING LEGEND

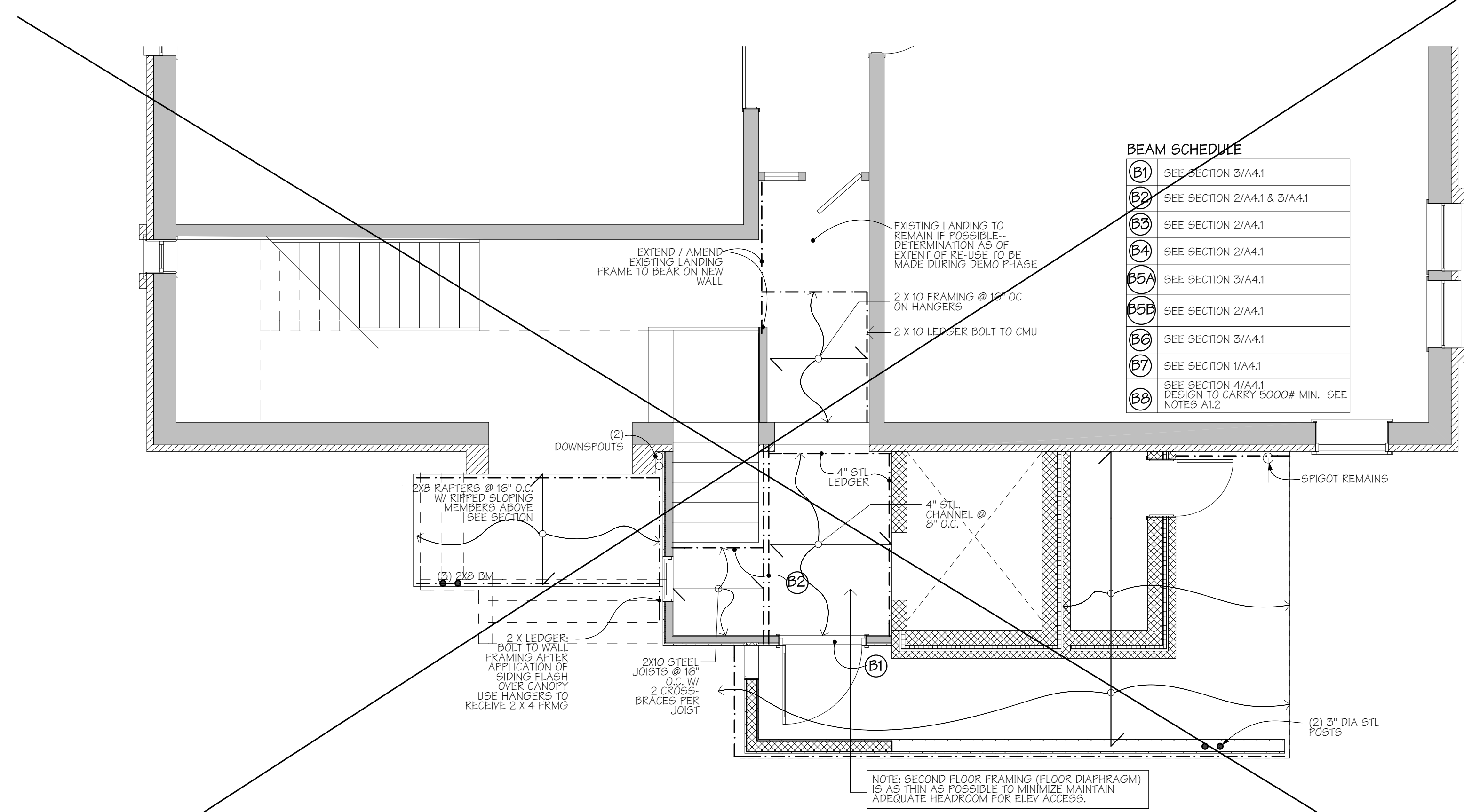
5 WAY DIMMER SWITCH

LIGHTING LEGEND

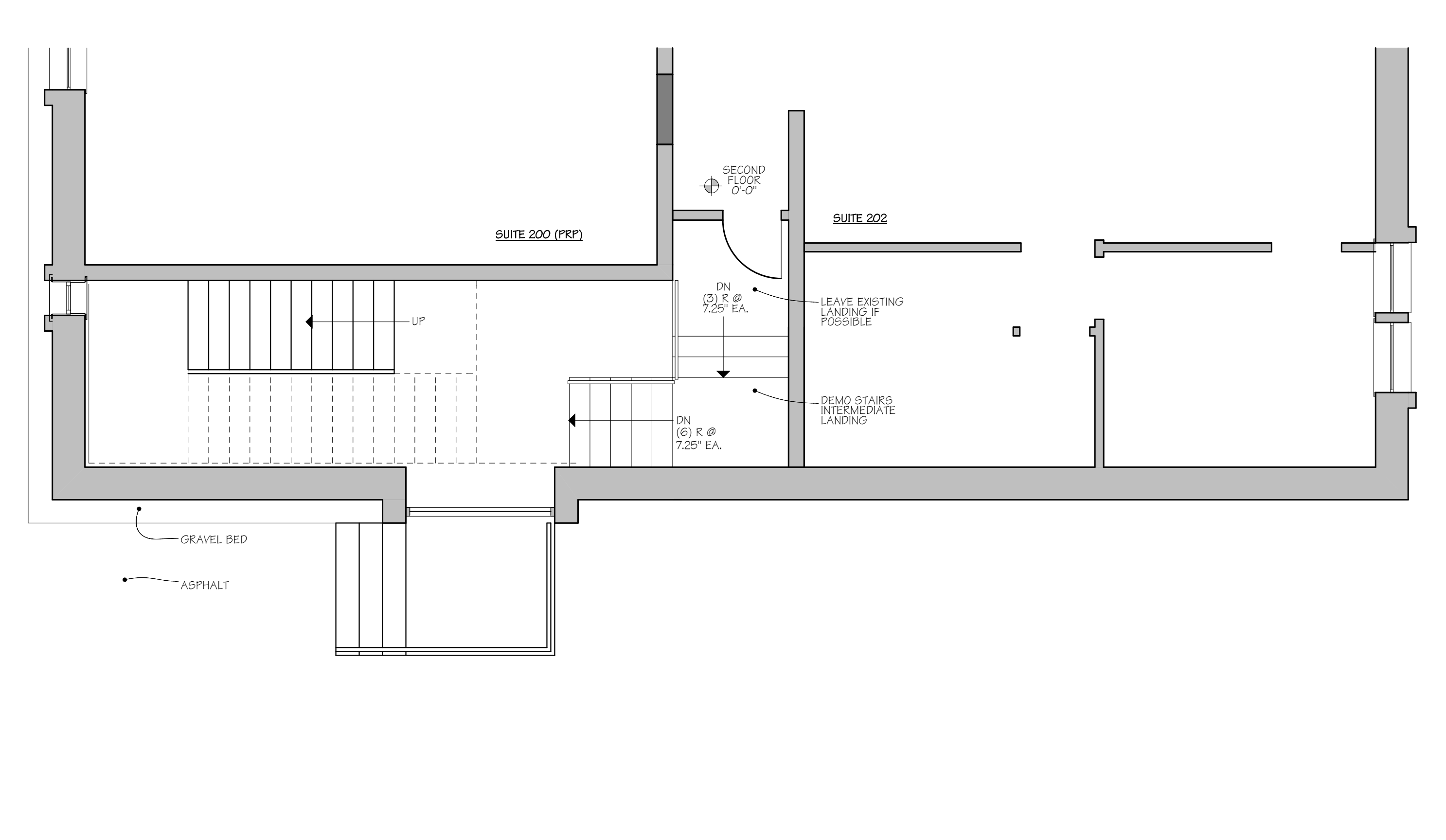
SYMBOL	GENERIC DESCRIPTION	MODEL # / TRIM # / LAMP / NOTES
	RECESSED CAN LIGHTS	TBS
	WALL SCONCE	TBS
	TREAD LIGHT	TBS

1 PLAN: SECOND FLOOR PROPOSED
SCALE: 1/4" = 1'-0"

2 PLAN: SECOND FLOOR RCP
SCALE: 1/4" = 1'-0"



3 PLAN: SECOND FLOOR FRAMING
SCALE: 1/4" = 1'-0"



4 PLAN: SECOND FLOOR AS-BUILT / DEMO
SCALE: 1/4" = 1'-0"