

FOR SALE - High Visibility Commercial Lot

1739 Eastland Court, Lexington, KY 40505

\$1,326,000



PROPERTY SUMMARY

1739 Lot:	1.56 AC \$1,326,000
Property Type:	Commercial Vacant Land
Zoning:	B-3 - Highway Service Business
Traffic Counts:	E New Circle Rd - 43,969 Winchester Rd - 31,744

High visibility, prime commercial lot ready for development. Located at the corner of E New Circle Road and Winchester Road, which provide easy access to downtown Lexington, Hamburg, and I-75. This property is zoned B-3 and flanked by Infiniti Dealership and Bypass Rentals, suitable for retail, restaurant, hotel, car wash, gas station, etc.



JAMES M. SCHRADER

859-288-5008

jschrader@schradercommercial.com

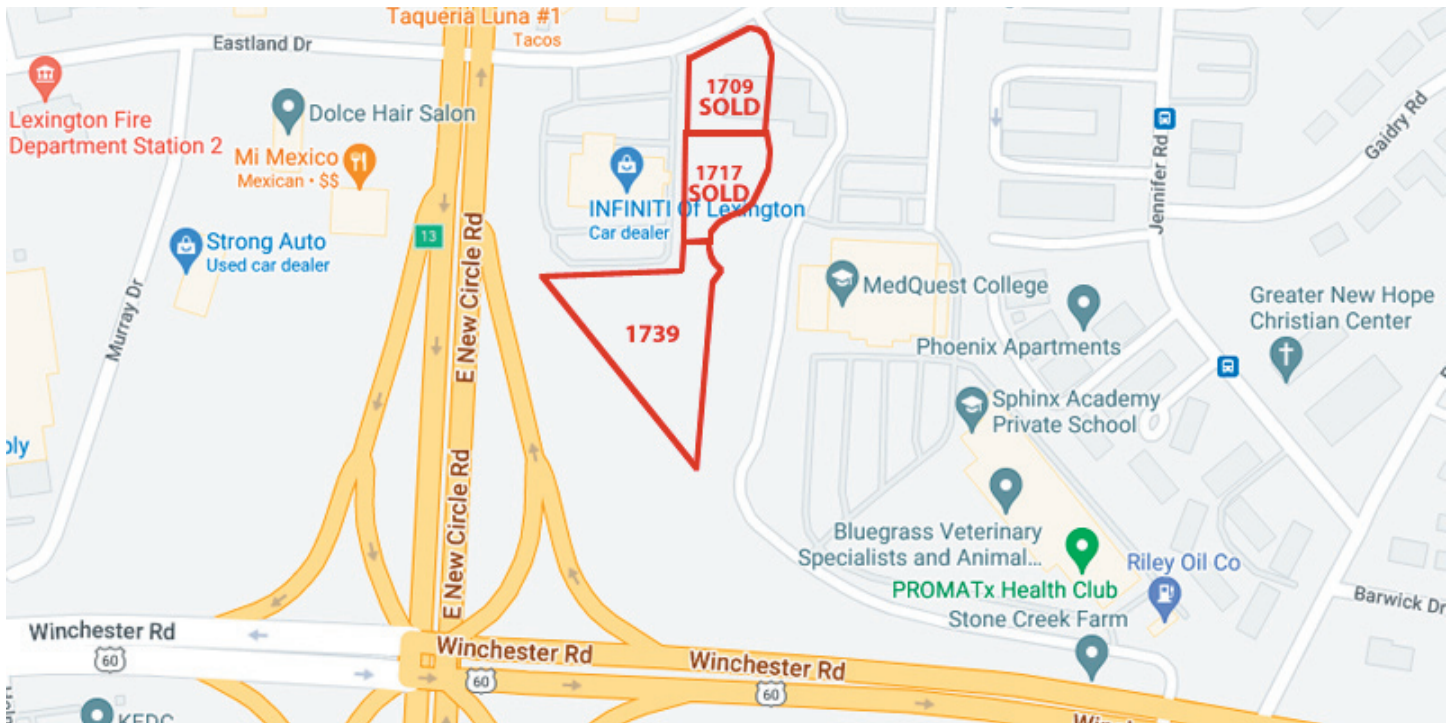
444 E Main Street, Suite 110
PO Box 21793 Lexington, KY 40522

SCHRADER
COMMERCIAL PROPERTIES, LLC

859-288-5008 / schradercommercial.com

The information contained herein is from sources believed, but not guaranteed to be reliable. Schrader Commercial Properties, LLC makes no representations or warranties regarding the property and you should conduct a careful independent investigation of the property to determine its suitability for your use and investment.

Map



Aerial



