

FOR LEASE

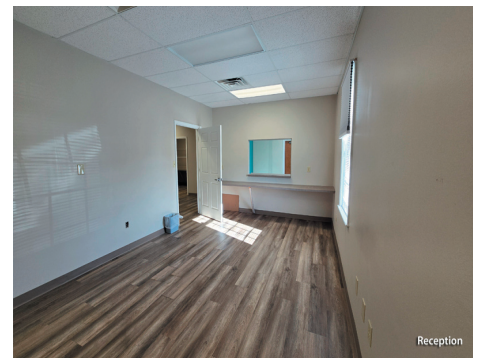
370 Highland Park, Suite 3, Richmond, KY 40475

\$14.50 /SF/Year



SUITE 3

Space Available:	2,965 SF
Rental Rate:	\$14.50 /SF/Year
Lease Type:	NNN
Available:	2/1/25
Property Type:	Office
Space Sub-Type:	Medical Office
Building Class:	B



This suite is and end unit and features:

Lobby

Reception

5 Offices (1 has counters and shelves)

Bullpen / Cubicle Area

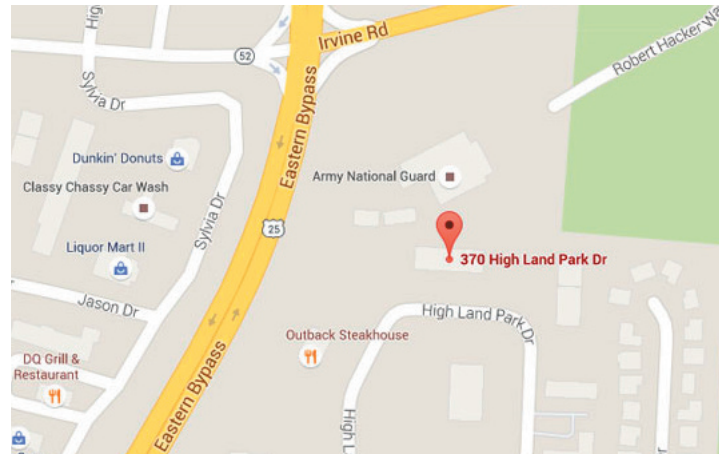
Large Breakroom with Kitchenette

2 Restrooms

Storage Room and Sink Area

This one story office building is conveniently located just off the Bypass near Lake Reba.

It is situated beside Outback Steakhouse with plenty of parking in a beautiful office park. Neighboring tenants are Caretenders and StepStone Family & Youth Services.



CHERI MCMULLIN

859-940-6483

cmcmullin@schradercommercial.com

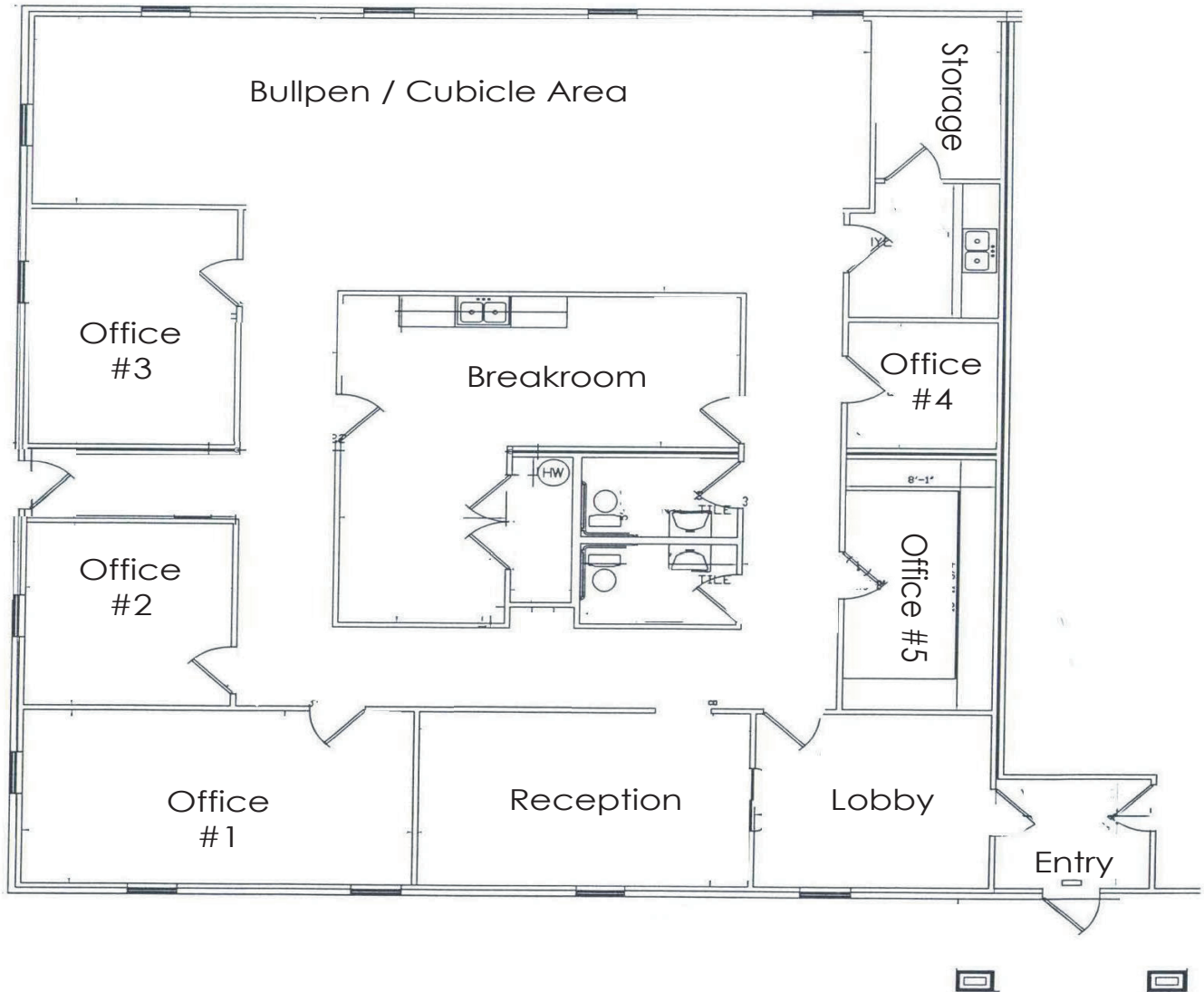
444 E Main Street, Suite 110
PO Box 21793 Lexington, KY 40522

SCHRADER
COMMERCIAL PROPERTIES, LLC

859-288-5008 / schradercommercial.com

The information contained herein is from sources believed, but not guaranteed to be reliable. Schrader Commercial Properties, LLC makes no representations or warranties regarding the property and you should conduct a careful independent investigation of the property to determine its suitability for your use and investment.

Floor Plan



370 Highland Park Dr
Ste 3
Richmond, KY

±2,965 sf

Property Images

