

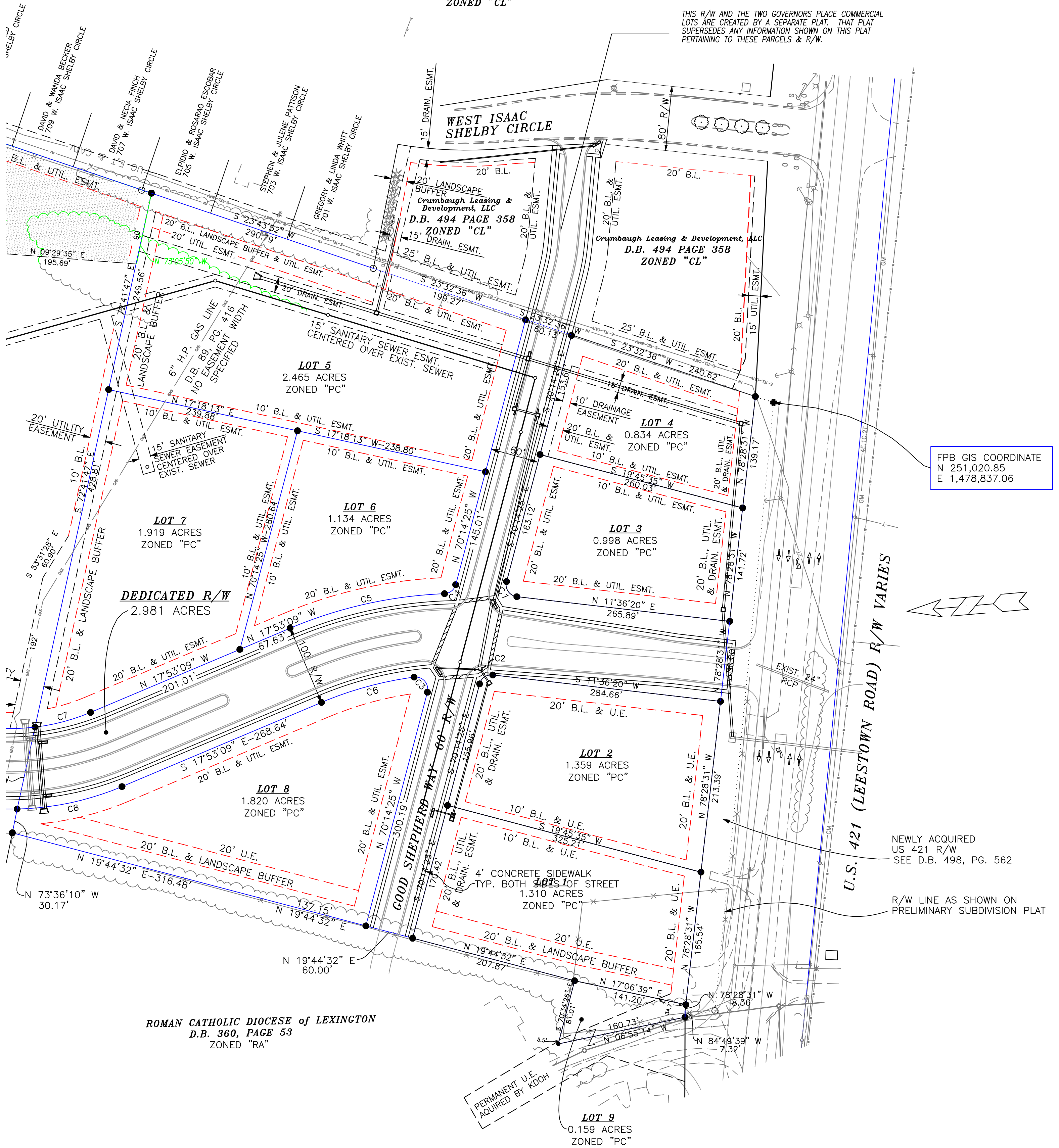
GOVERNORS PLACE
SUBDIVISION
PLAT CAB. "D" SLIDE 69.

Crumbaugh Leasing & Development, LLC
D.B. 494 PAGE 358
ZONED "CL"

STREET TREE NOTE :

ALL TREES WILL BE A 1.50" CALIPER SIZE (Min.) AND PLANTED ON 30' CENTERS ALONG ALL STREETS. TREE SPACING WILL BE ADJUSTED TO AVOID CONFLICT WITH ANY DRIVEWAYS. TREE SPACING SHALL BE EQUIVALENT TO A 30' C-C SPACING.

THIS R/W AND THE TWO GOVERNORS PLACE COMMERCIAL LOTS ARE CREATED BY A SEPARATE PLAT. THAT PLAT SUPERSEDES ANY INFORMATION SHOWN ON THIS PLAT PERTAINING TO THESE PARCELS & R/W.

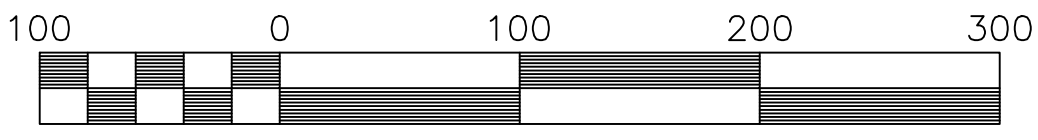


FPB GIS COORDINATE
N 251,020.85
E 1,478,837.06

NEWLY ACQUIRED
US 421 R/W
SEE D.B. 498, PG. 562

R/W LINE AS SHOWN ON
PRELIMINARY SUBDIVISION PLAT

ROMAN CATHOLIC DIOCESE of LEXINGTON
D.B. 360, PAGE 53
ZONED "RA"



Scale 1" = 100'