

FOR LEASE

370 Highland Park Dr, Suite 2, Richmond, KY 40475

\$13.50 /SF/Year



SUITE 2

Space Available: 2,464 SF

Rental Rate: \$13.50 /SF/Year

Lease Type: NNN

Property Type: Office

Building Class: B



THIS SUITE FEATURES:

Lobby

Reception

6 Offices

2 Work Rooms

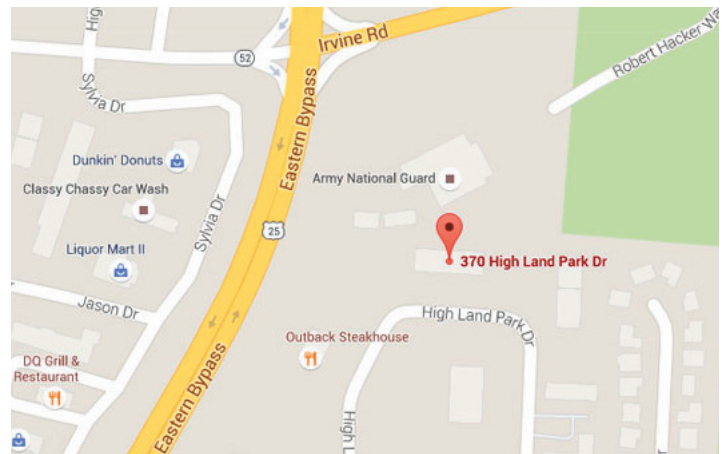
Large Group Room with Kitchenette

2 Restrooms

Storage Room with Shelves

An attractive one story office building perfect for medical or other office user. Plenty of Parking.

This one story office building is conveniently located just off the Bypass near Lake Reba. It is situated beside Outback Steakhouse with plenty of parking in a beautiful office park.



CHERI MCMULLIN

859-940-6483

cmcmullin@schradercommercial.com

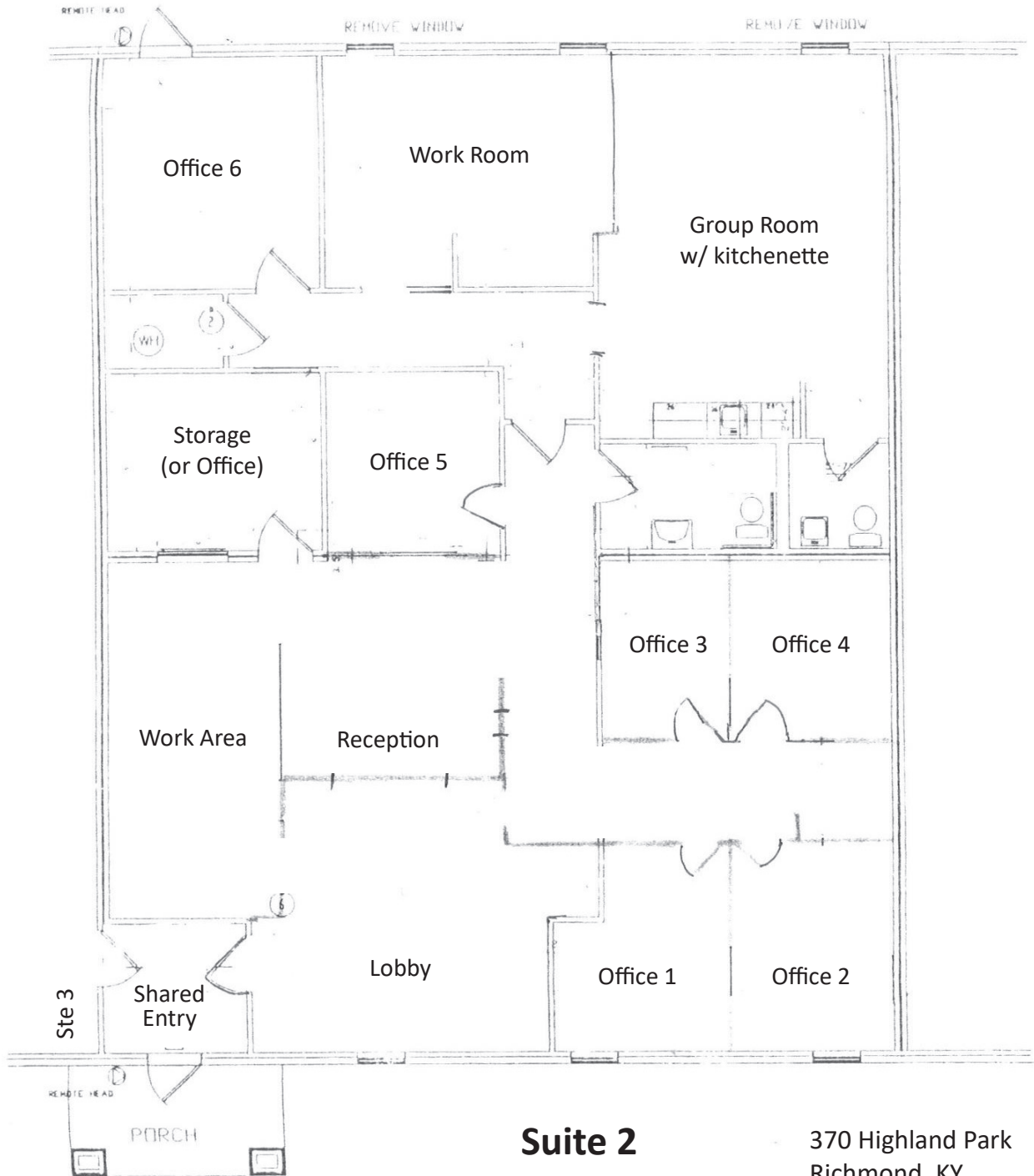
444 E Main Street, Suite 110
PO Box 21793 Lexington, KY 40522

SCHRADER
COMMERCIAL PROPERTIES, LLC

859-288-5008 / schradercommercial.com

The information contained herein is from sources believed, but not guaranteed to be reliable. Schrader Commercial Properties, LLC makes no representations or warranties regarding the property and you should conduct a careful independent investigation of the property to determine its suitability for your use and investment.

Floor Plan



Suite 2

2,464 sf

370 Highland Park
Richmond, KY
40475

Property Images



Reception



Group Room



Office 4



Office 5



Office 6



Work Room