



GENERAL CONTRACTORS
CONSTRUCTION MANAGERS

331 Boxley Avenue
Louisville, Kentucky 40209

FIRST FLOOR PLAN—EXISTING DEMOLITION

DRAWN BY	DATE	DWG. NO.
----------	------	----------

RLH	06/09/04	9402-D2
-----	----------	---------

REVISIONS



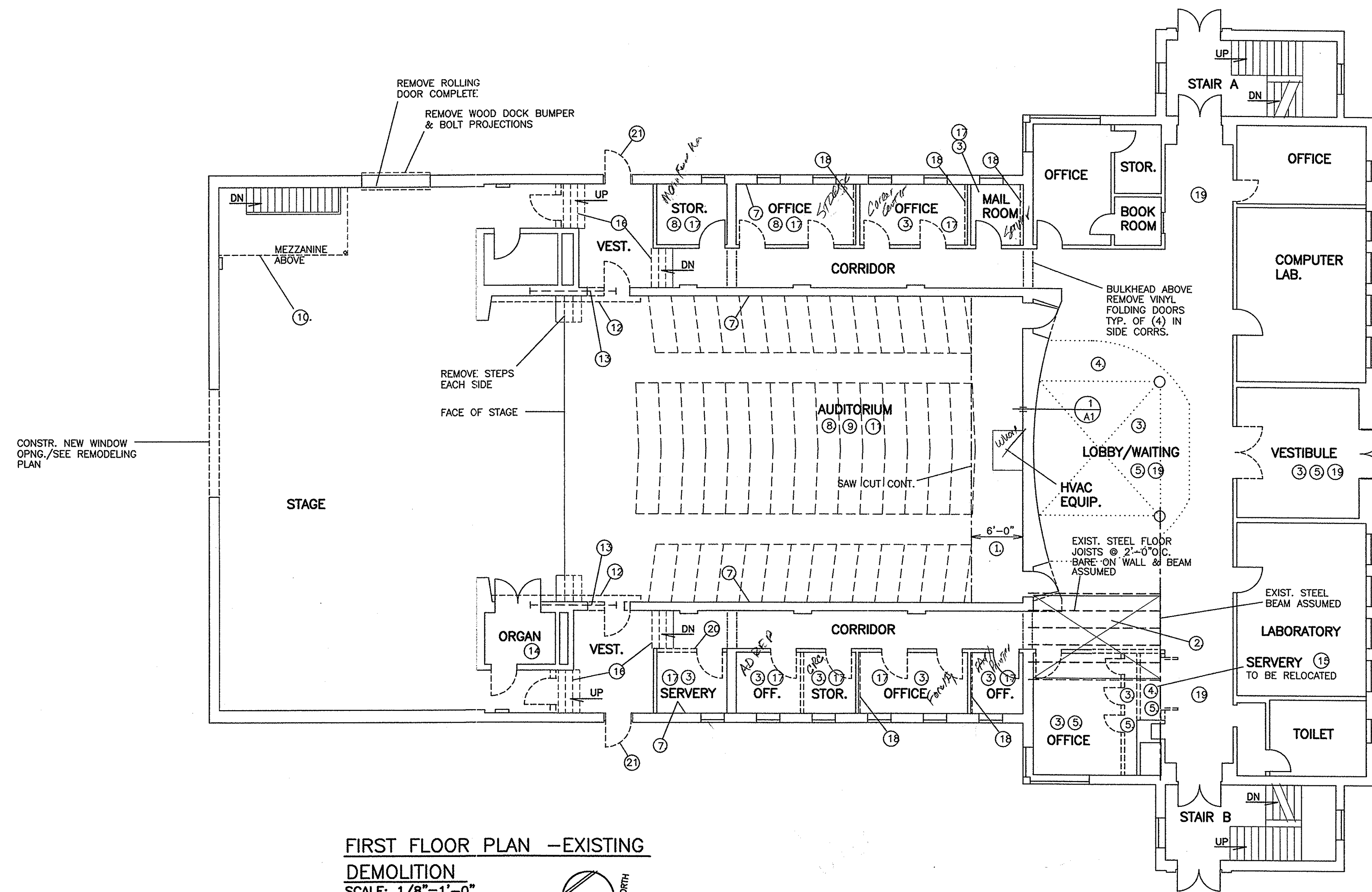
SHEET NOTES

UNLESS NOTED OR INDICATED TO BE REMOVED ON THE PLAN, EXIST. FINISHES AND ELEMENTS SHALL REMAIN AS THEY EXIST. FINISHES AND ELEMENTS TO REMAIN SHALL BE PROTECTED FROM SOIL OR DAMAGE. IF SOILED OR DAMAGED, THEY SHALL BE REPAIRED TO THE OWNER'S SATISFACTION AT THE EXPENSE OF THE CONTRACTOR PRODUCING THE CONDITIONS TO BE REPAIRED.

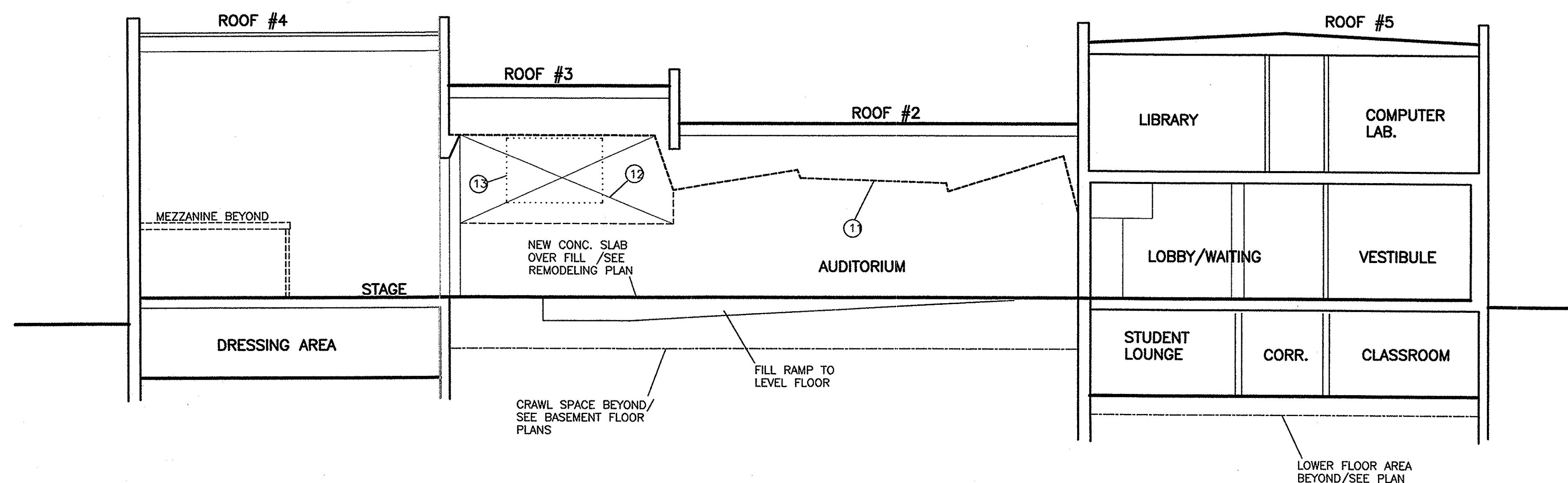
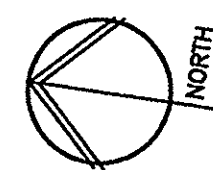
- ① AREA OF AUDITORIUM FLOOR INDICATED SHALL BE REMOVED FOR CONSTRUCTION OF THE NEW CONC. SLAB OVER FILL /EXIST. HVAC EQUIP. & CONC. PAD SHALL REMAIN IN PLACE
- ② NEW ELEVATOR FLOOR OPENING —SEE PLANS SHT. A5 SAW CUT EDGES AND REMOVE EXIST. CONC. & METAL FIRST FLOOR DECK AND BASEMENT PLAS. & MET. LATH CLG. TO REMOVE EXIST. STEEL JOIST AND PROVIDE CLEARANCE FOR NEW CONSTR./SEE ELEVATOR AREA LAYOUT SHT. A5/COORD. FLOOR OPNG. SIZE WITH ELEV. CONTR.
- ③
- ④ CUT EDGE OF EXIST. FLOOR TILE AND REMOVE TILE FROM AREA TO RECV. NEW CARPET/TILE TO REMAIN BELOW NEW TILE TO BE INSTALLED OUTSIDE THE NEW CARPET AREA/SEE PLAN SHT. A2
- ⑤ REMOVE RESIL. WALL BASE FROM AREA TO RECV. NEW FLOOR FINISH AND PREPARE WALL TO RECV. NEW BASE/COORD. WITH THE ROOM FINISH SCHED.
- ⑥ REMOVE LOSE FLOOR TILE ONLY AND PREPARE FLOOR TO RECV. NEW TILE/COORD. WITH THE REMODELING PLAN
- ⑦ REMOVE LOSE WALL PLAS./COORD. WITH THE REMODELING WORK SCOPE/SEE REMODELING PLAN
- ⑧ EXIST. FLOOR TILE TO BE REMOVED BY THE HAZARDOUS MATERIAL ABATEMENT CONTRACTOR UNDER SEPARATE CONTRACT.
- ⑨ REMOVE SEATING COMPLETE
- ⑩ REMOVE MEZZANINE COMPLETE INCL. ACCESS LADDER, WALL LEDGERS, SUPPORTS, DECK, ETC.
- ⑪ REMOVE SUSP. PLAS. CLG COMPLETE INCL. CATWALK AND CATWALK ANGLE SUPPORTS ABOVE
- ⑫ REMOVE WOOD WALL GRILLAGE
- ⑬ 6'-0"± x 13'-0"± WALL OPNG./SILL 9'-5" ABOVE THE STAGE FLOOR/INSTALL A NEW MET. STUD AND DRYWALL CLOSURE WITH ONE LAYER OF 5/8" DWALL. EA. SIDE 3 5/8" STUDS @ 16"O.C./FILL STUD CAVITY COMPLETE WITH SOUND ATTENUATION BLANKETS/SEE PERIMETER EDGE DETAIL 4 SHT. A8FOR (4) SIDES
- ⑭ REMOVE ORGAN KEYBOARD AND ASSOCIATED ELEMENTS COMPLETE TO CLEAR ROOM FOR NEW SERVERY/SEE PLAN SHT. A2
- ⑮ REMOVE EXIST. APPLIANCES, ETC. FROM THE EXIST. SERVERY AND REINSTALL IN NEW SERVERY 132/SEE PLAN SHT. A2
- ⑯ REMOVE EXIST. STEEL RISERS, TREADS & STRINGERS FOR CONSTR. OF NEW CONC. STEPS/SEE PLAN SHT. A2
- ⑰ REMOVE STUCK-ON ACOUST. CLG. TILES/COORD. WITH NEW CLG. INSTALLATION
- ⑱ REMOVE STUCK-ON ACOUST. WALL TILES/COORD. WITH WALL REFURBISHING.
- ⑲ HAZARDOUS MATERIAL ABATEMENT CONTRACTOR TO REMOVE 12"± SO. AREAS OF ACOUST. PLASTER COATING AT 4'-0"O.C. NORTH-SOUTH AND EAST-WEST FOR INSTALLATION OF NEW CLG. HANGERS/NEW CLG. CONTR. TO COORD. EXACT LOCATIONS DURING CONSTRUCTION.
- ⑳ COORDINATE PARTITION DEMO. TO MINIMIZE CLG. DAMAGE/SEE COVER PLATE NOTE SHT. A2/REPAIR FINISH TO MATCH EXIST. AS REQD. EA. SIDE OF COVER PLATE
- ㉑ REMOVE WOOD FRAME & TRIM COMPLETE AT OPNGS. INDICATED/SEE LEGEND NOTE BELOW

LEGEND

- ===== EXIST. WALL OR PARTITION TO BE REMOVED /COORD. WITH NEW CONSTR.—SEE REMODELING PLAN
- - - - - EXIST. DOOR AND HARDWARE TO BE REMOVED/REMOVE CASING & TRIM AT OPNGS. TO BE CLOSE ONLY—SEE REMODELING PLAN
- ||| CONSTR. NEW OPNG. IN EXIST. WALL OR PARTITION WITH NEW CONSTR.—SEE REMODELING PLAN /COORD.



FIRST FLOOR PLAN —EXISTING
DEMOLITION
SCALE: 1/8"=1'-0"



BUILDING SECTION —EXISTING
SCALE: 1/8"=1'-0"