

# FOR LEASE

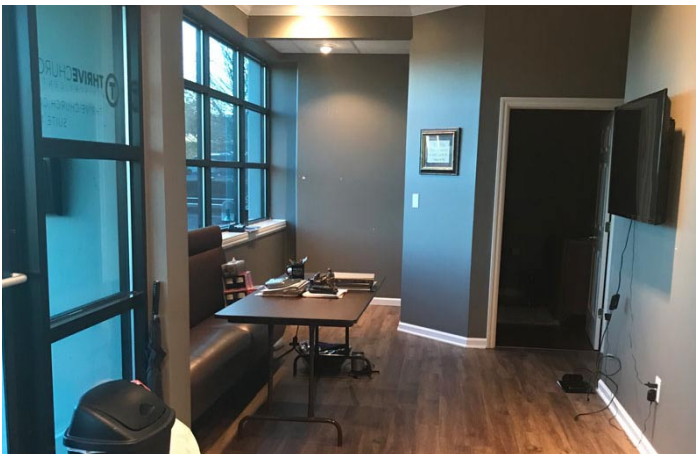
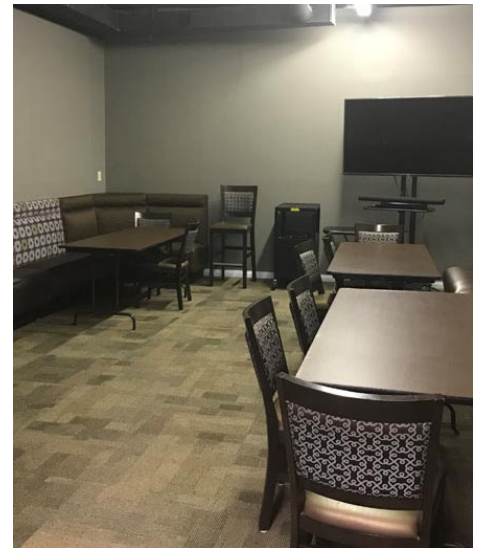
3229 Summit Square Pl, Ste 100, Lexington, KY 40509

\$1650.00 /Month



## Property Details - Suite 100

Space Available:	990 SF
Rental Rate:	\$1650 /Month (Lease rate includes everything but janitorial and phone/internet)
Property Type:	Office
Zoning:	P-1 - Professional Office



This office space has been recently renovated with beautiful finishes and flooring throughout. It is located in the Summit Square which is in close proximity to the Richmond Road/ Man-O War corridor offering great access to I-75 and I-64. The space includes a large reception area, kitchenette, large room that can be divided if necessary and a small office. It is a wonderful space with great parking and well maintained surroundings.



**LAURA ADAMS**

**859-333-6024**

ladams@schradercommercial.com

444 E Main Street, Suite 110  
PO Box 21793 Lexington, KY 40522

**SCHRADER**  
COMMERCIAL PROPERTIES, LLC

**859-288-5008 / schradercommercial.com**

The information contained herein is from sources believed, but not guaranteed to be reliable. Schrader Commercial Properties, LLC makes no representations or warranties regarding the property and you should conduct a careful independent investigation of the property to determine its suitability for your use and investment.

# Property Photos

