

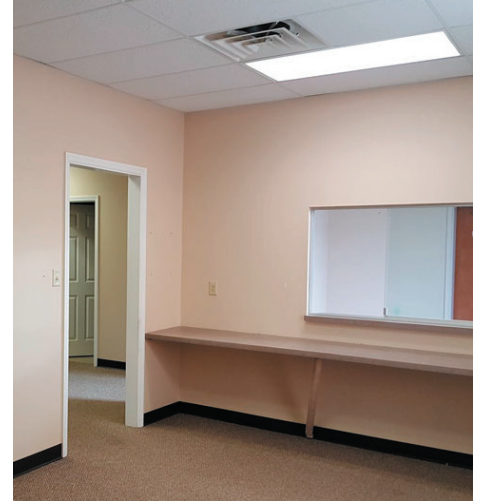
FOR LEASE

370 Highland Park, Suite 3, Richmond, KY 40475

\$12 /SF/Year

SUITE 3

Space Available:	2,965 SF
Rental Rate:	\$12.00 /SF/Year
Monthly Rate:	\$2,965 /Month
Lease Type:	NNN
Property Type:	Office
Space Sub-Type:	Medical Office
Building Class:	B



THIS SUITE FEATURES:

8 Offices

2 Restrooms

Conference Room

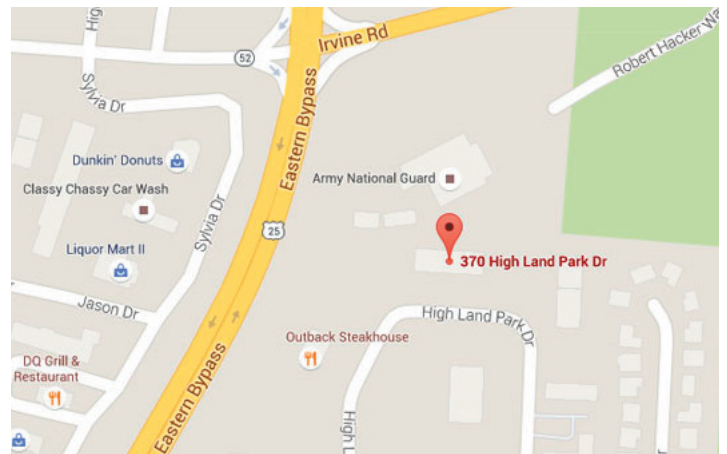
Waiting Room

Reception Area

Plenty of Parking

An attractive one story office building perfect for medical or other office user. Plenty of Parking.

The office building is conveniently located just off the Bypass near Lake Reba. It is situated beside Outback Steakhouse with good visibility in a beautiful office park.



CHERI MCMULLIN

859-940-6483

cmcmullin@schradercommercial.com

444 E Main Street, Suite 110
PO Box 21793 Lexington, KY 40522

SCHRADER
COMMERCIAL PROPERTIES, LLC

859-288-5008 / schradercommercial.com

The information contained herein is from sources believed, but not guaranteed to be reliable. Schrader Commercial Properties, LLC makes no representations or warranties regarding the property and you should conduct a careful independent investigation of the property to determine its suitability for your use and investment.

Floor Plan

